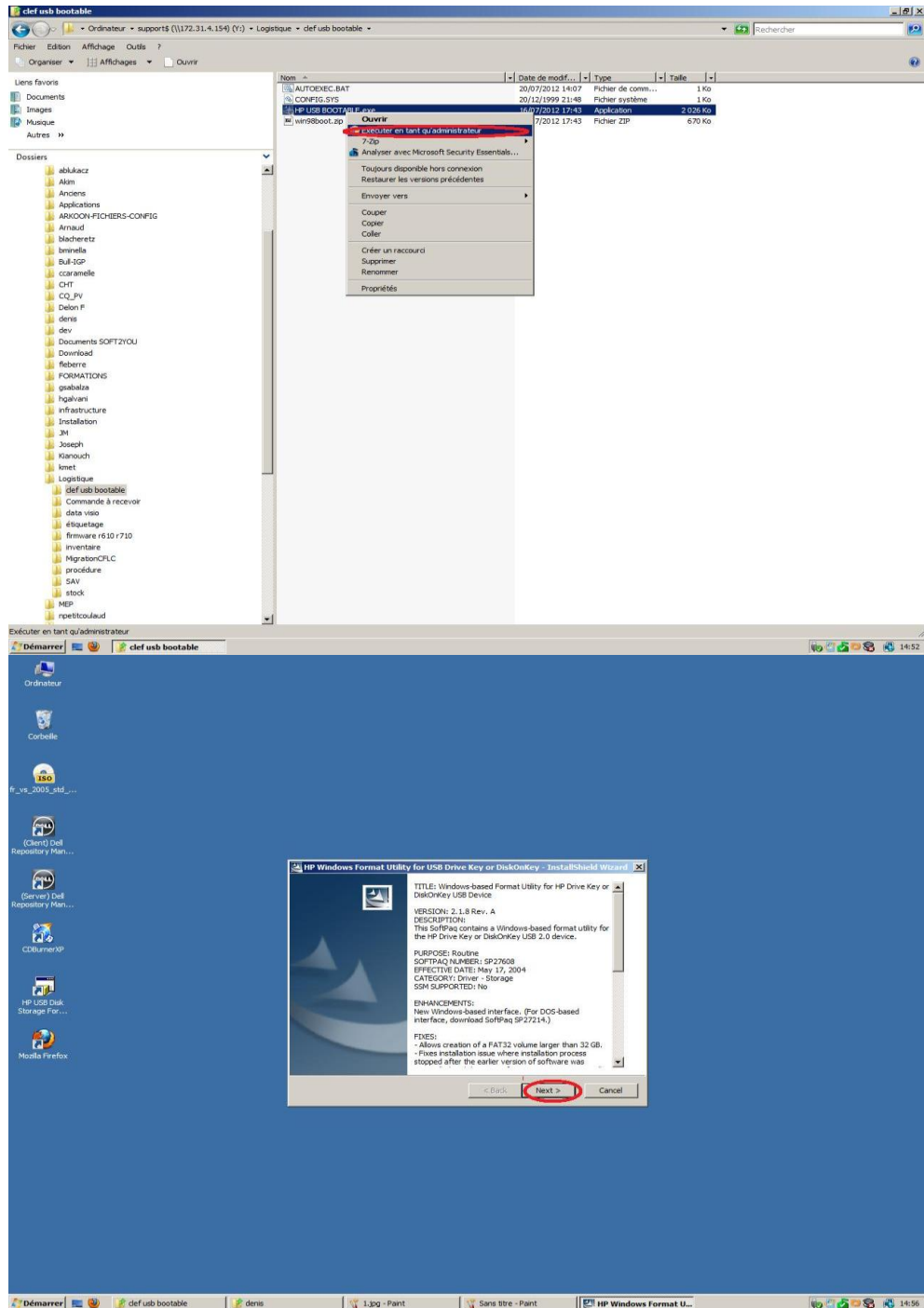


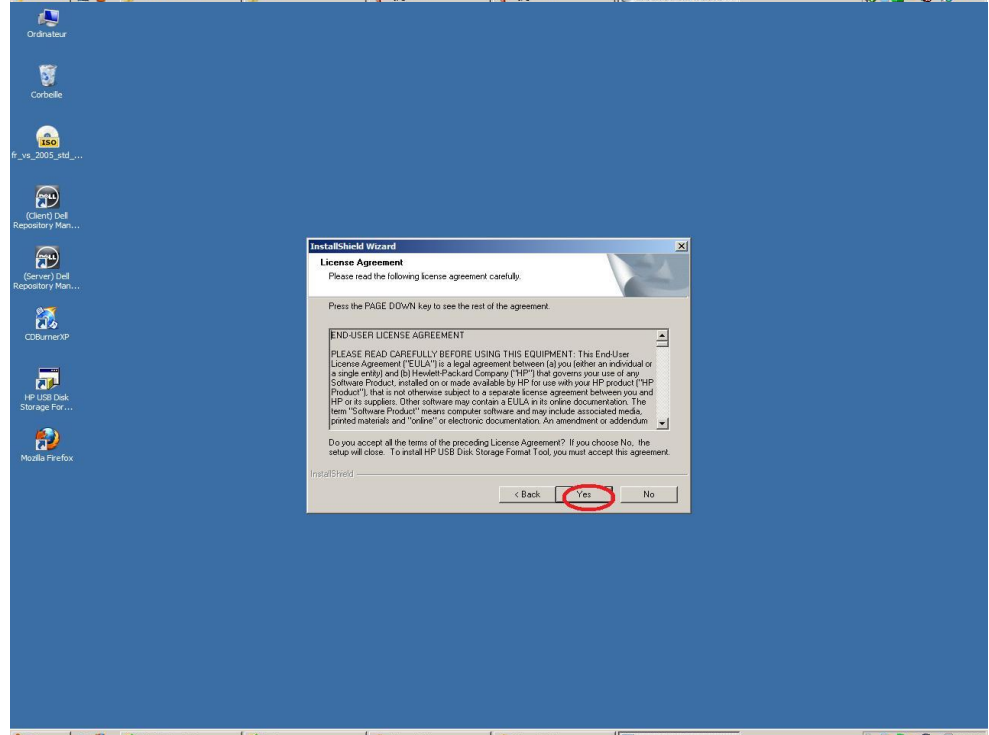
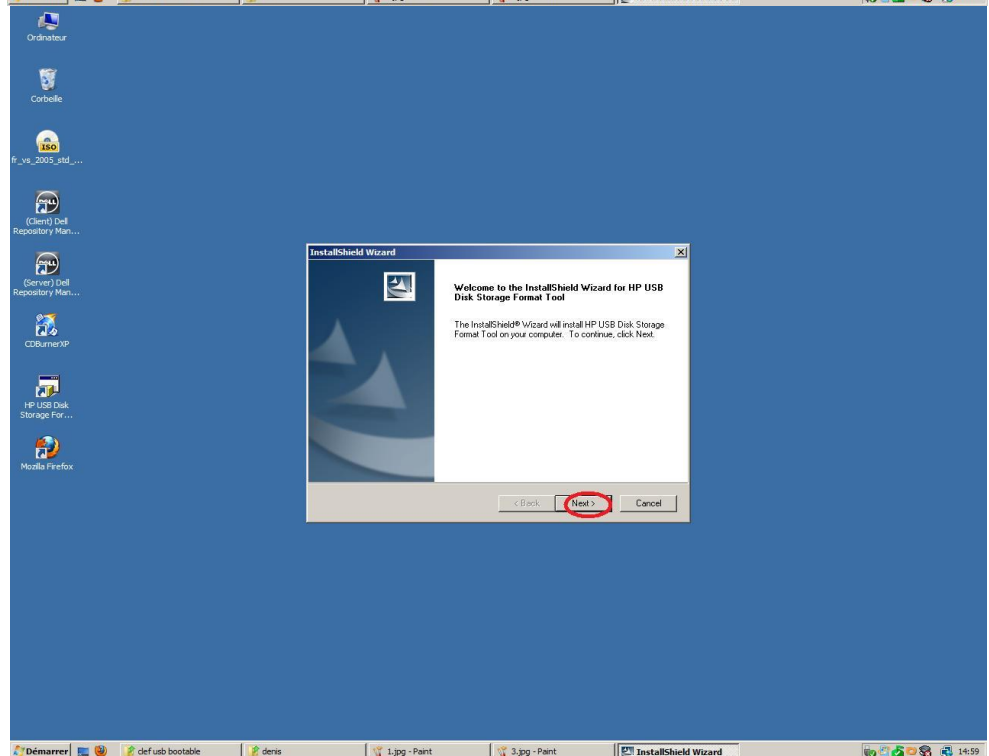
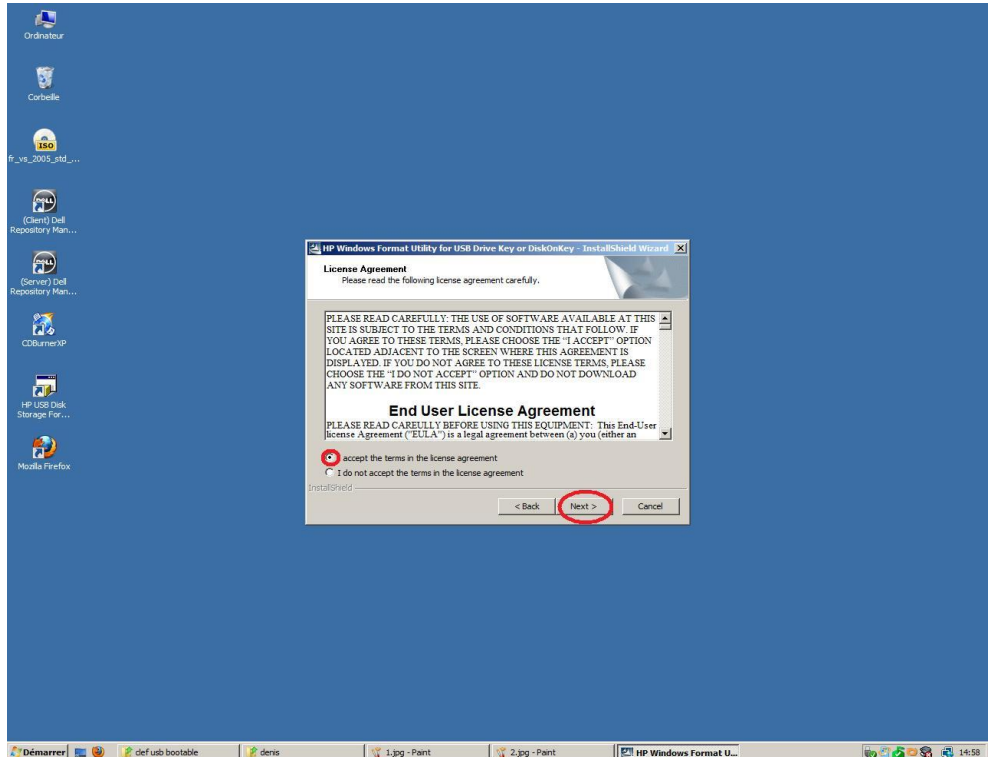
# Créer une clef usb bootable

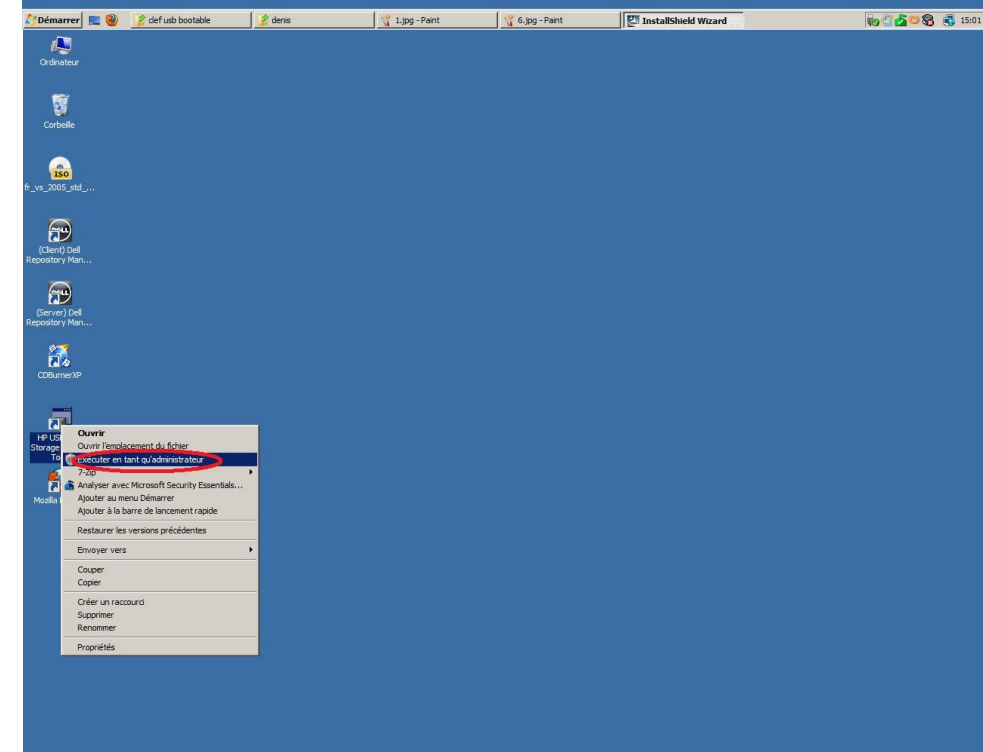
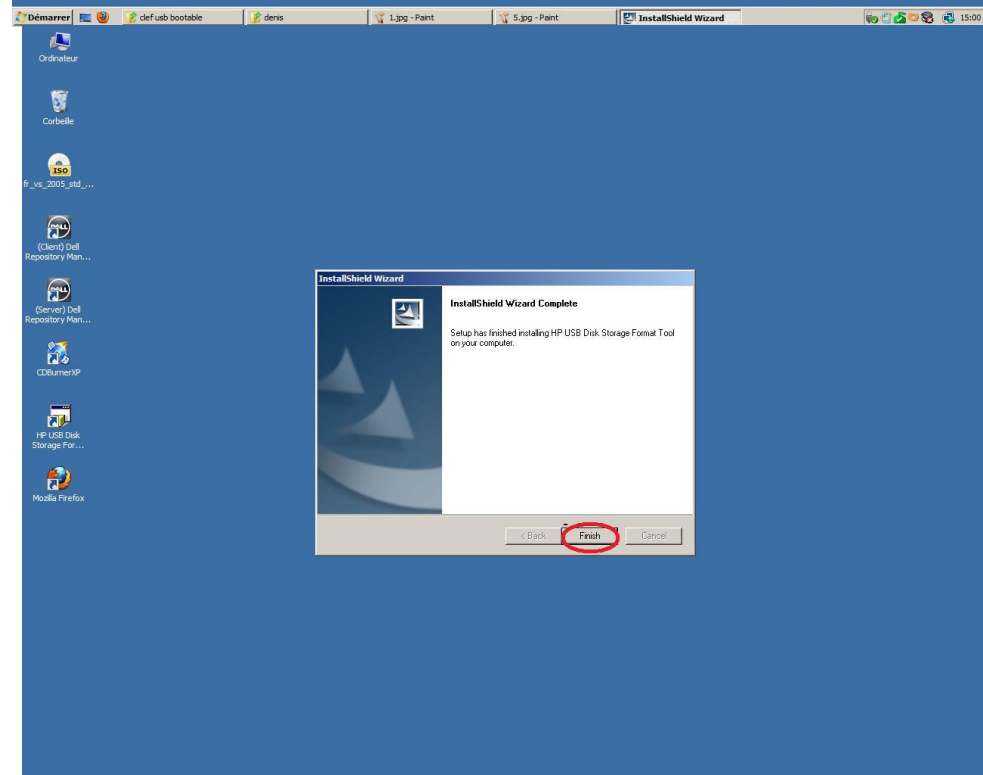
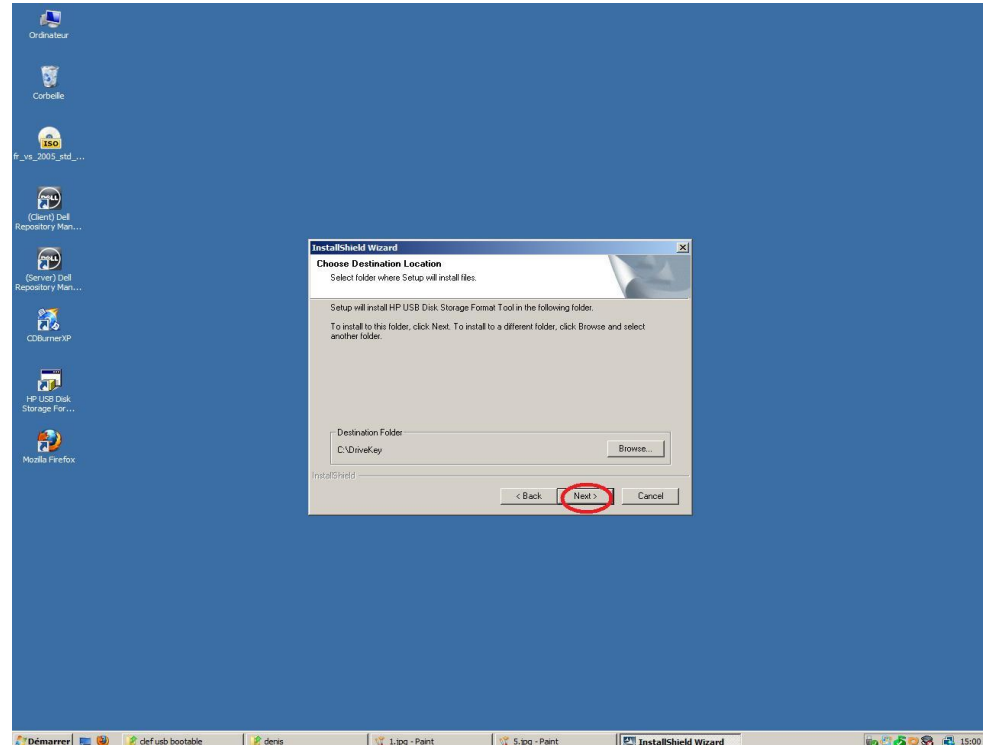
Installer le soft **HP USB BOOTABLE.exe**

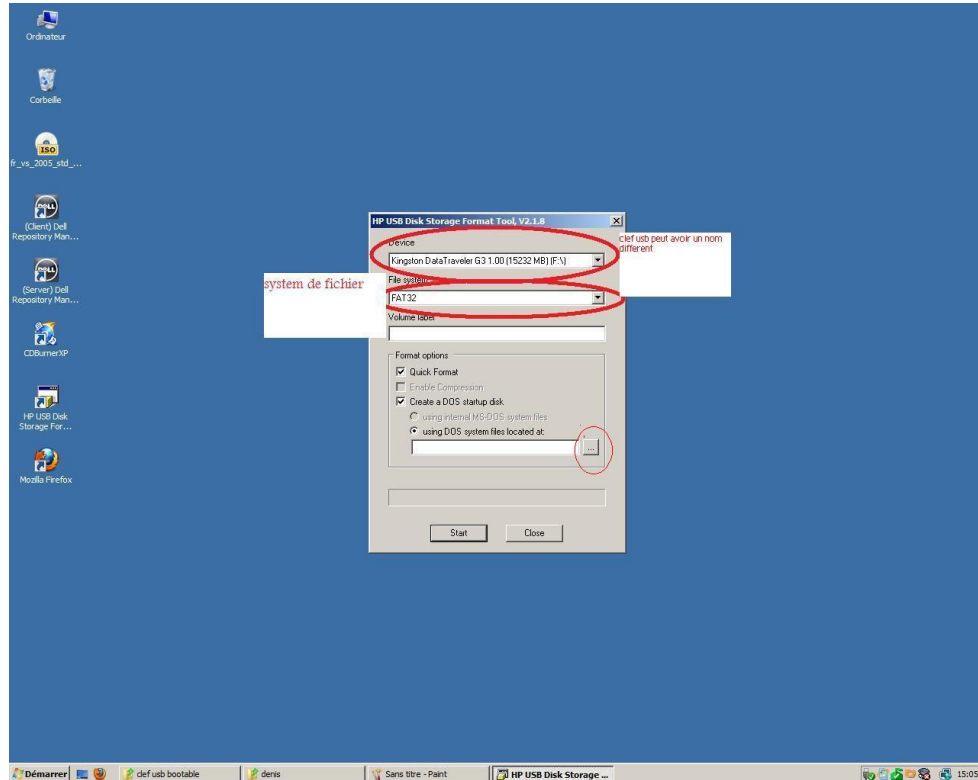
Le fichier se trouve sur le fichier

support\Logistique\clef usb bootable

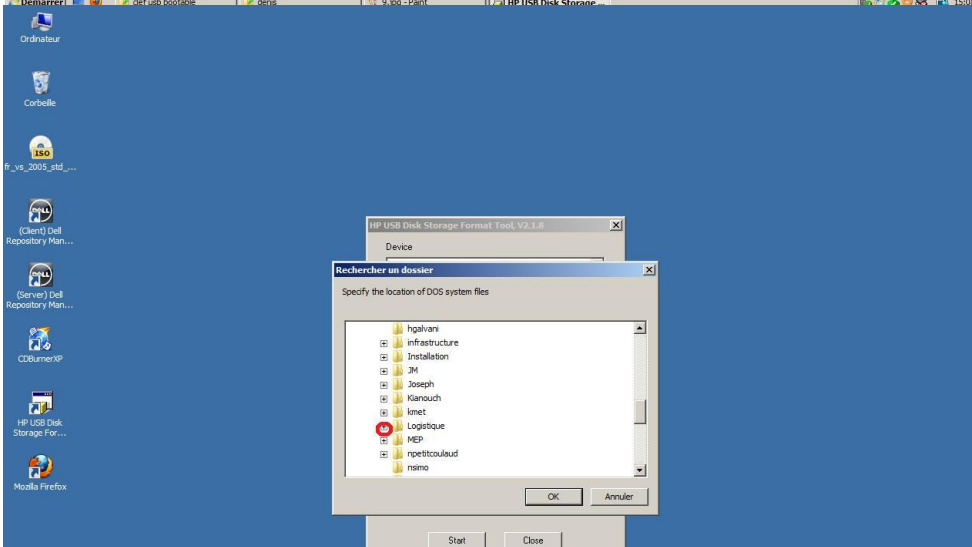
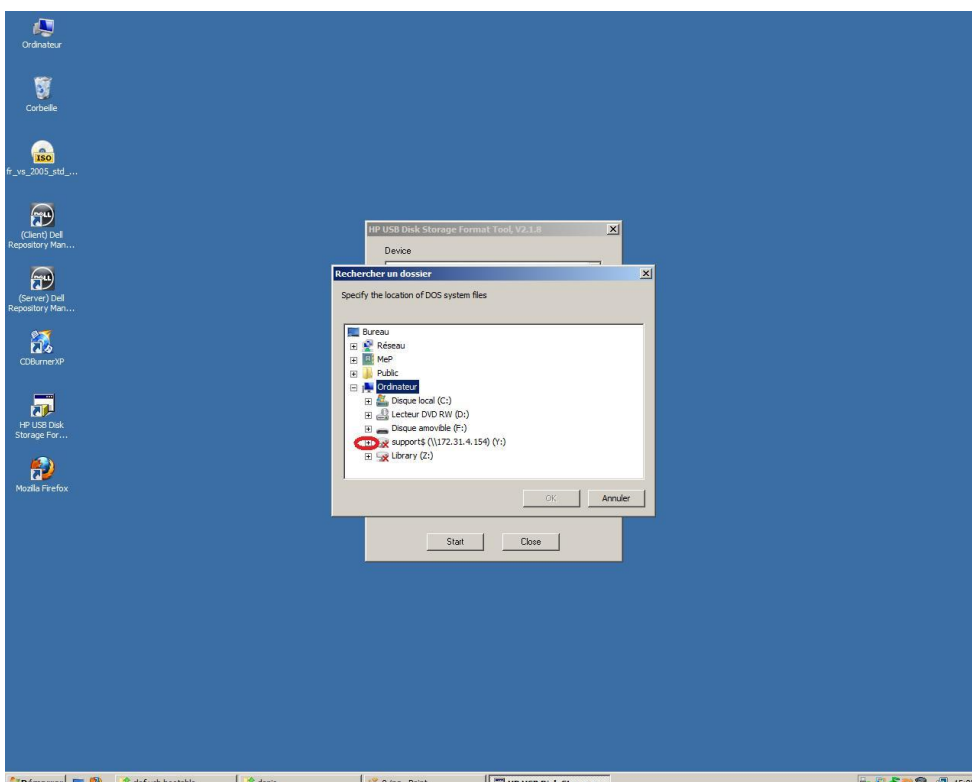


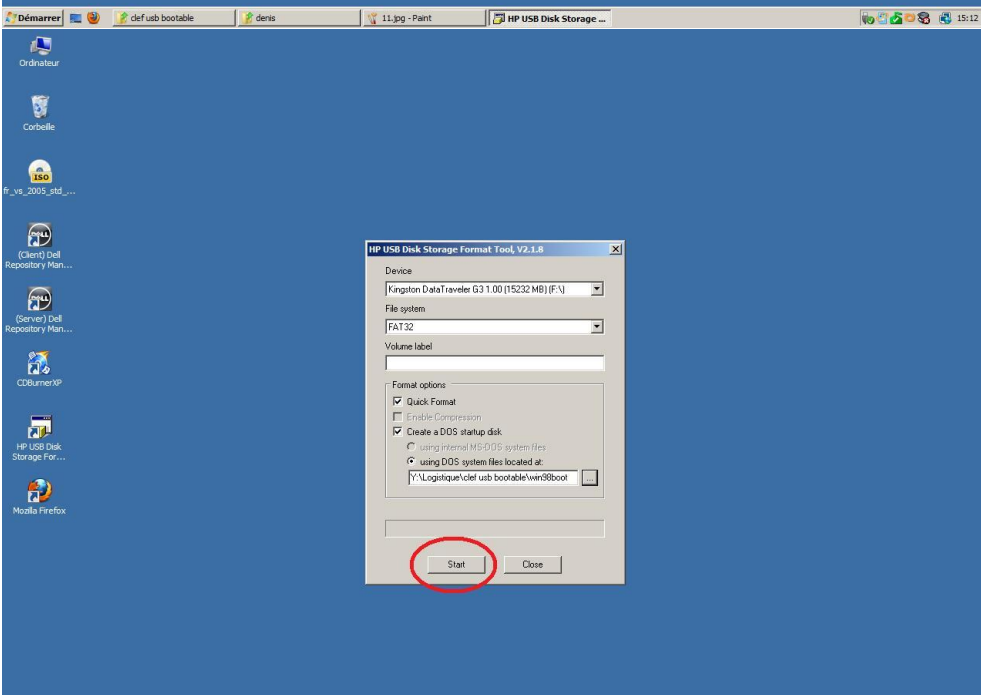
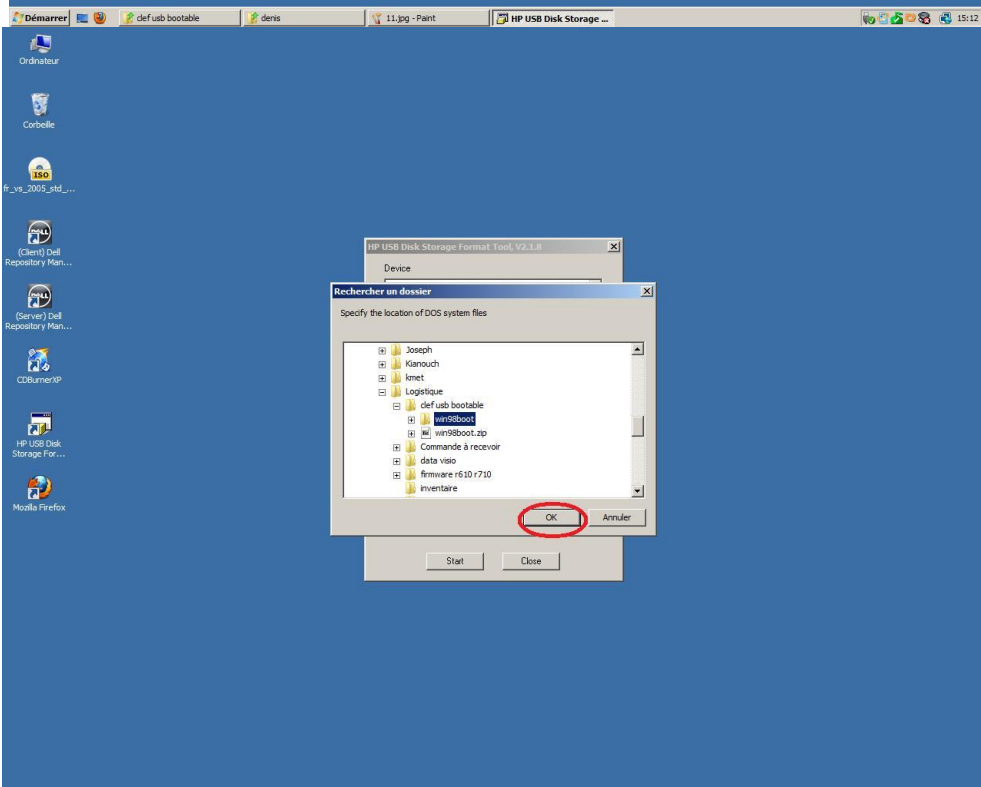
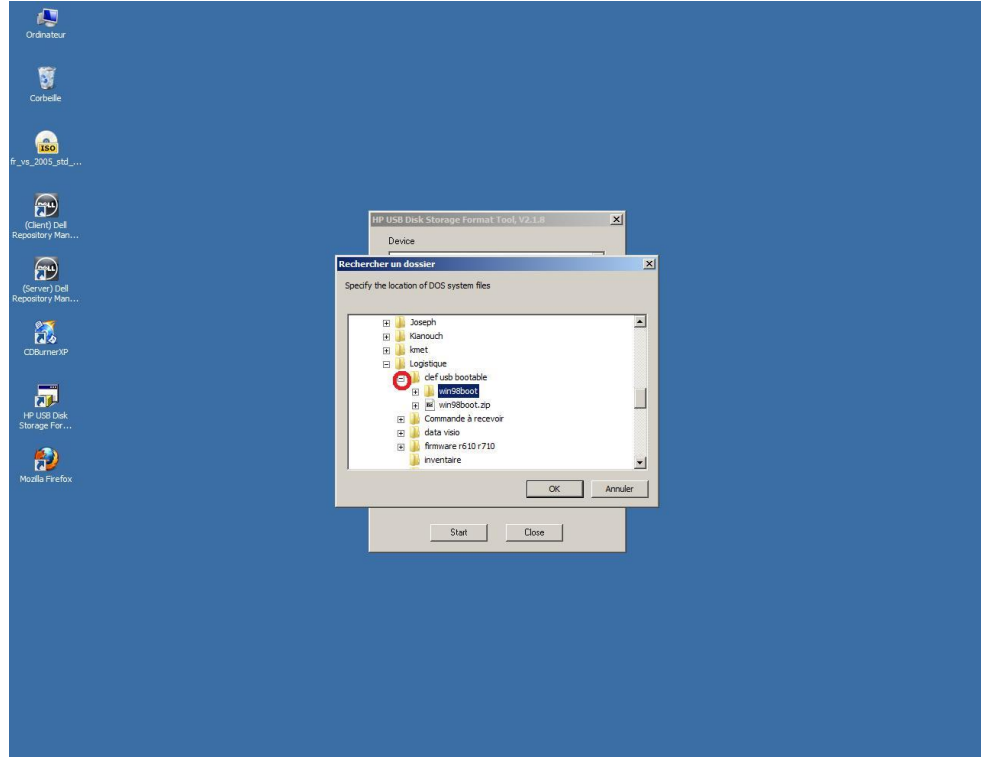


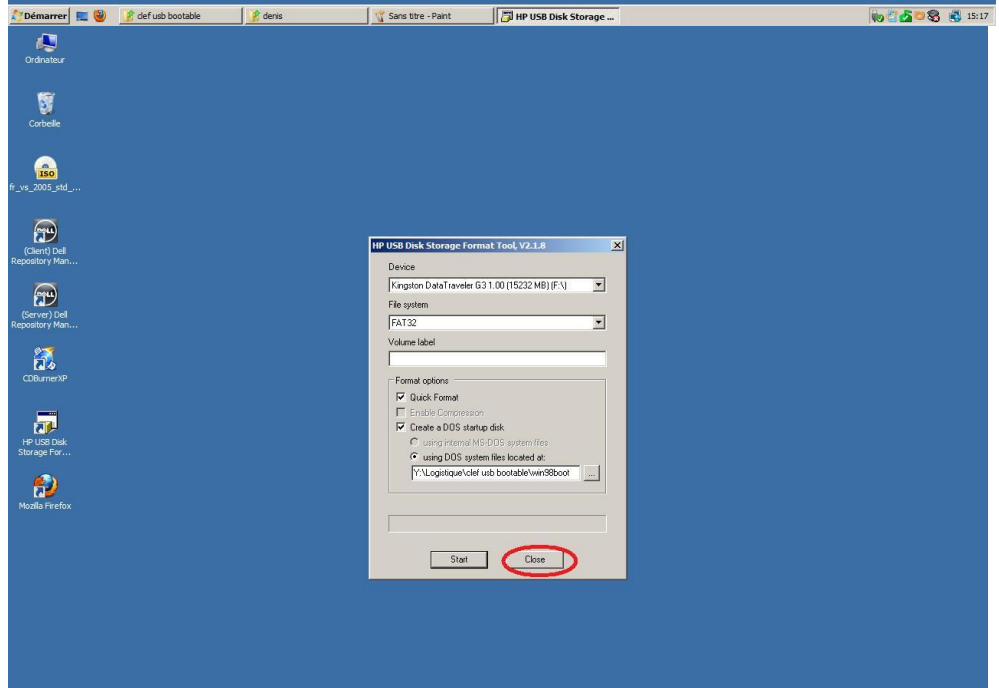
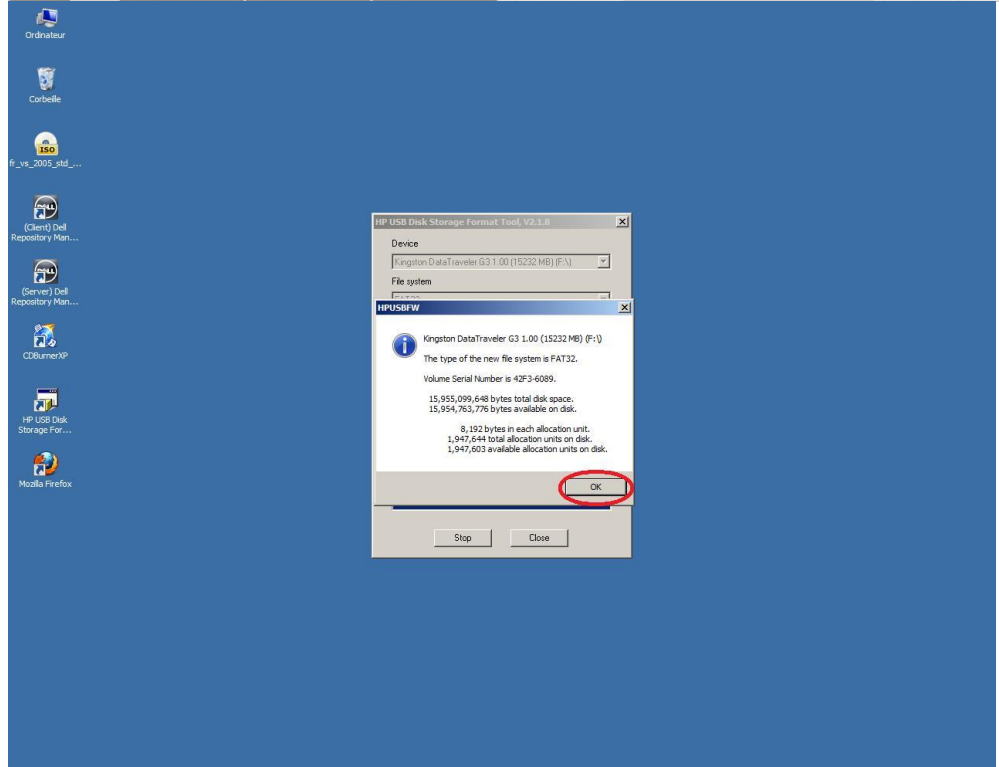
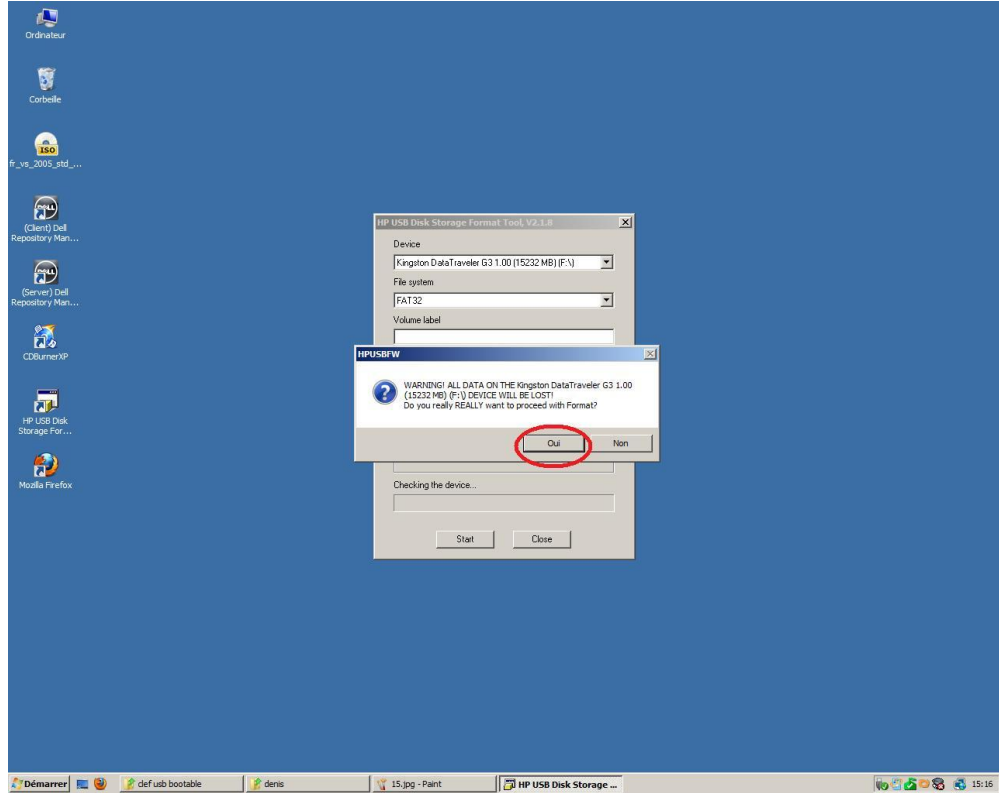




Clic sur découvrir pour accéder au fichier de boot  
ils sont dans le même répertoire que le soft  
support\Logistique\clef usb bootable\win98boot







Voilà vous avez créer une clef bootable